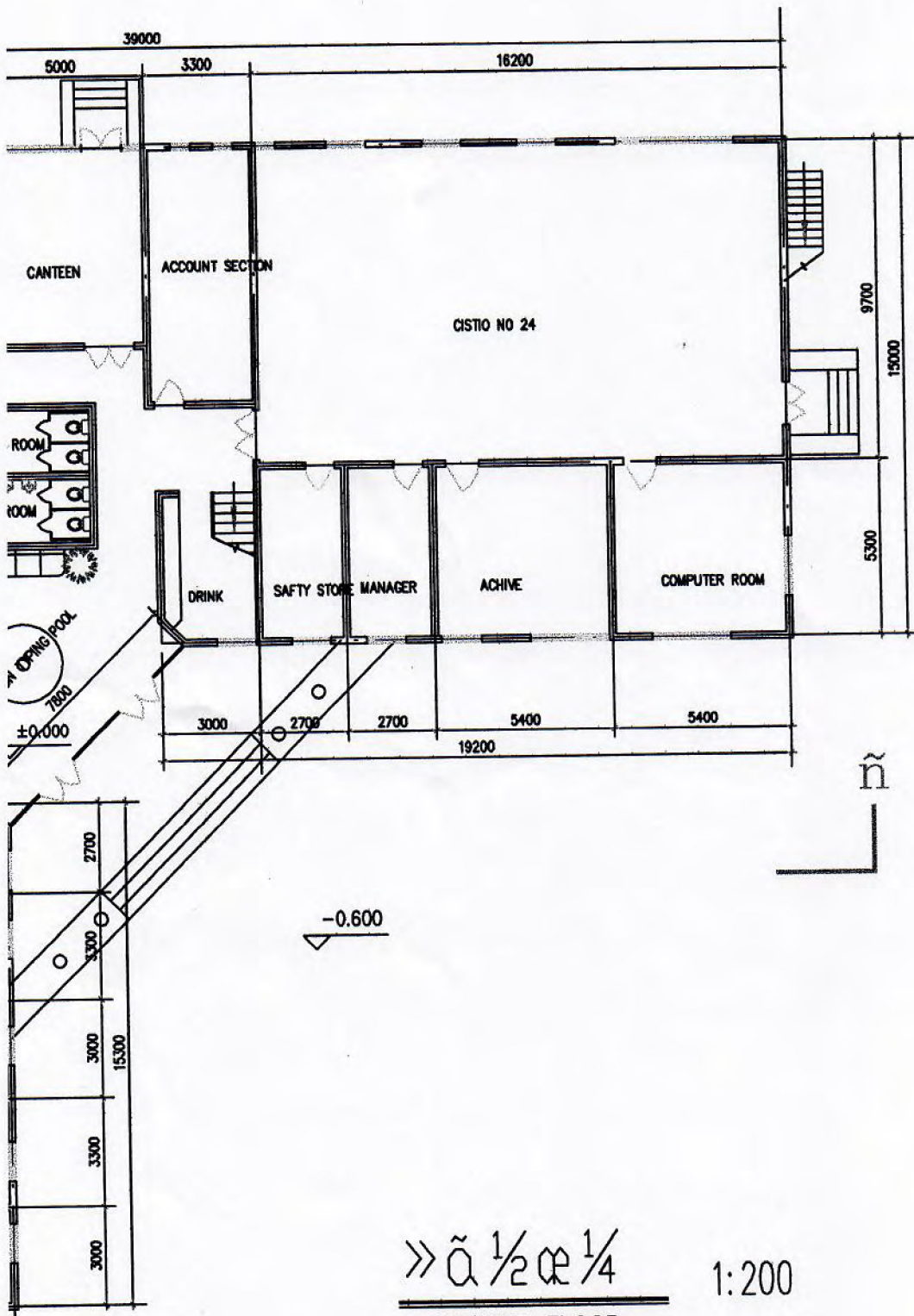


Ceiling heights
Room A = 280cm
Room B = 290cm

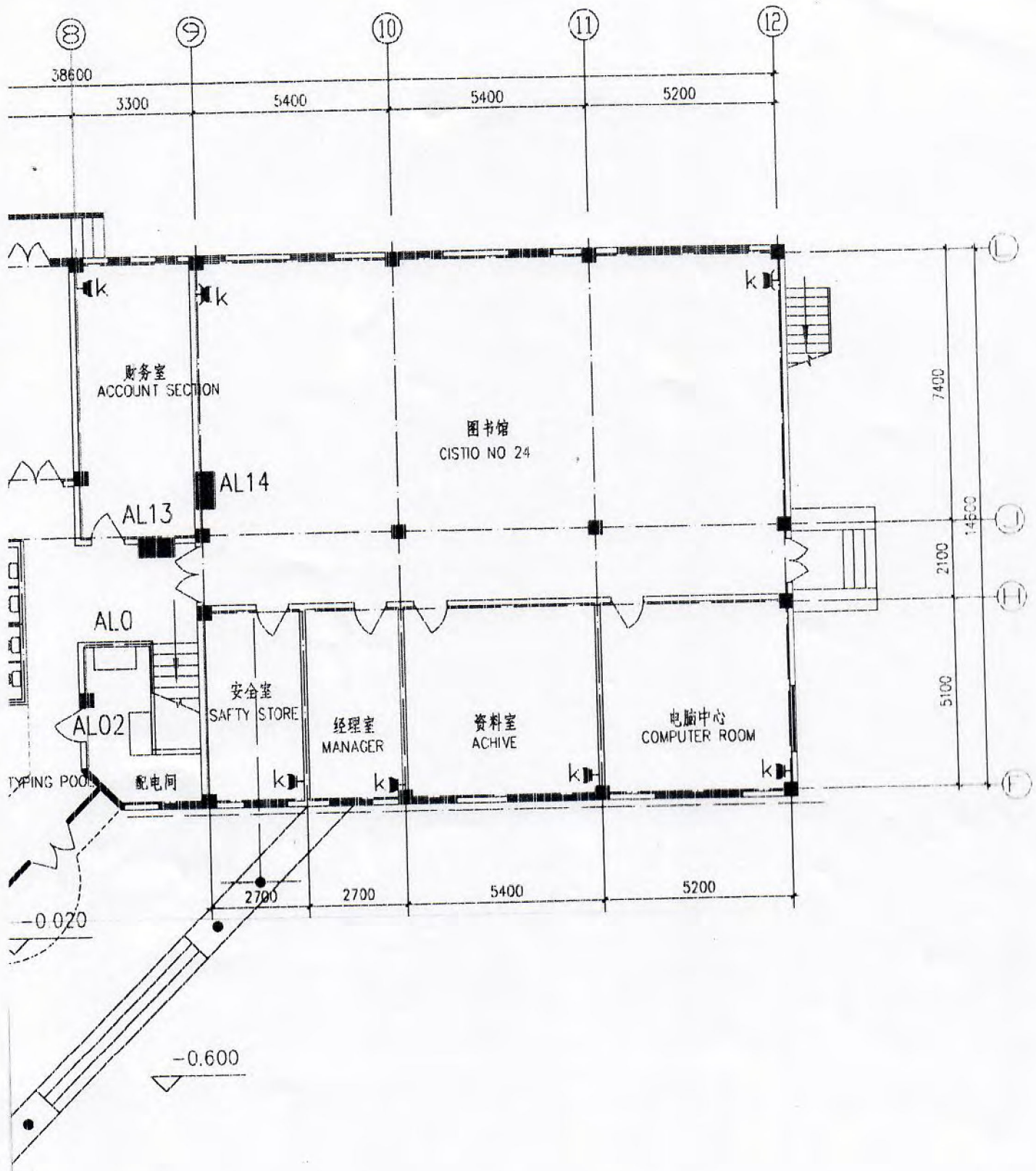
柱子定位详见结构图纸

1/2 残疾人坡道



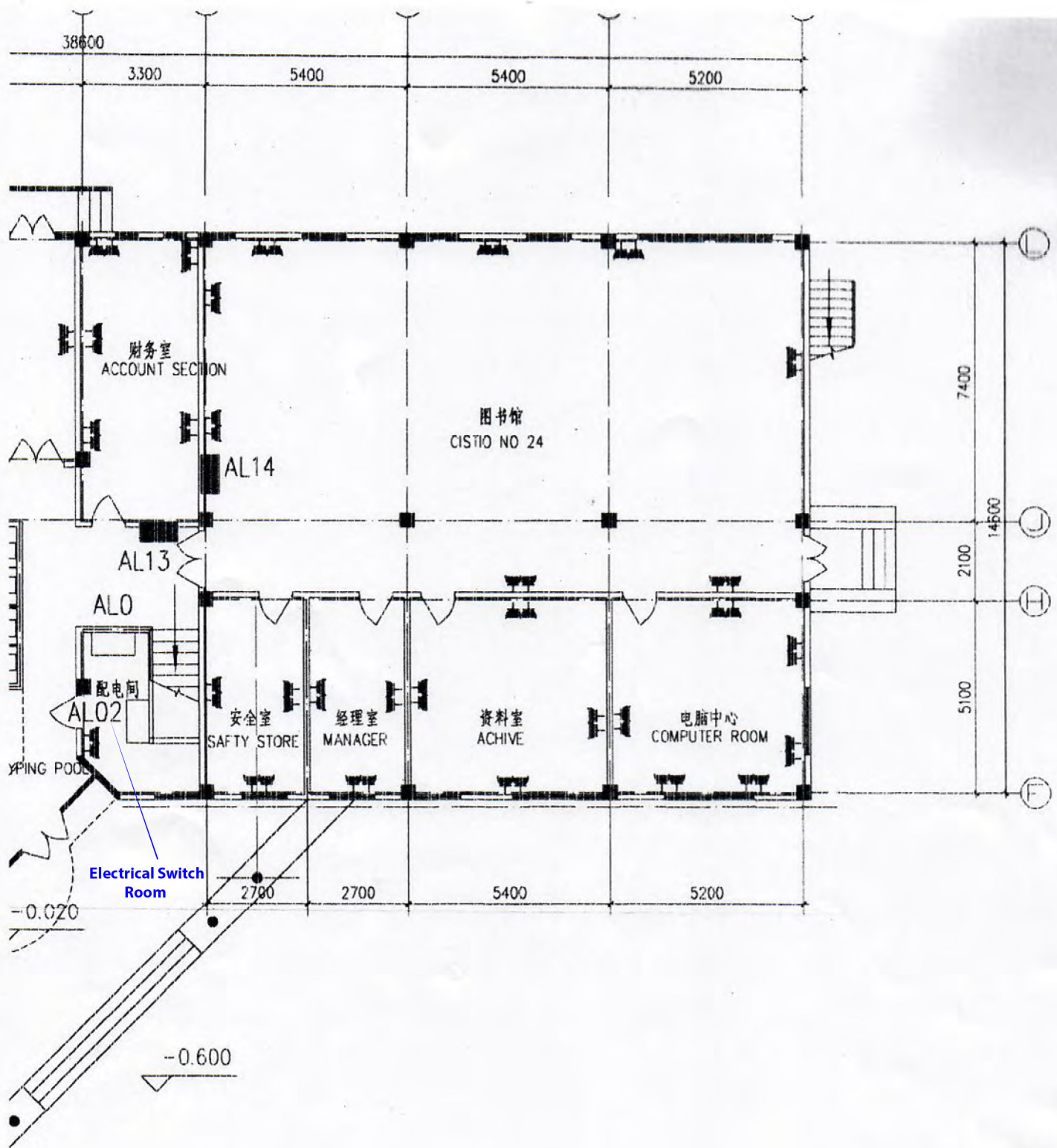
» ã ½ œ ¼
GROUND FLOOR

1:200



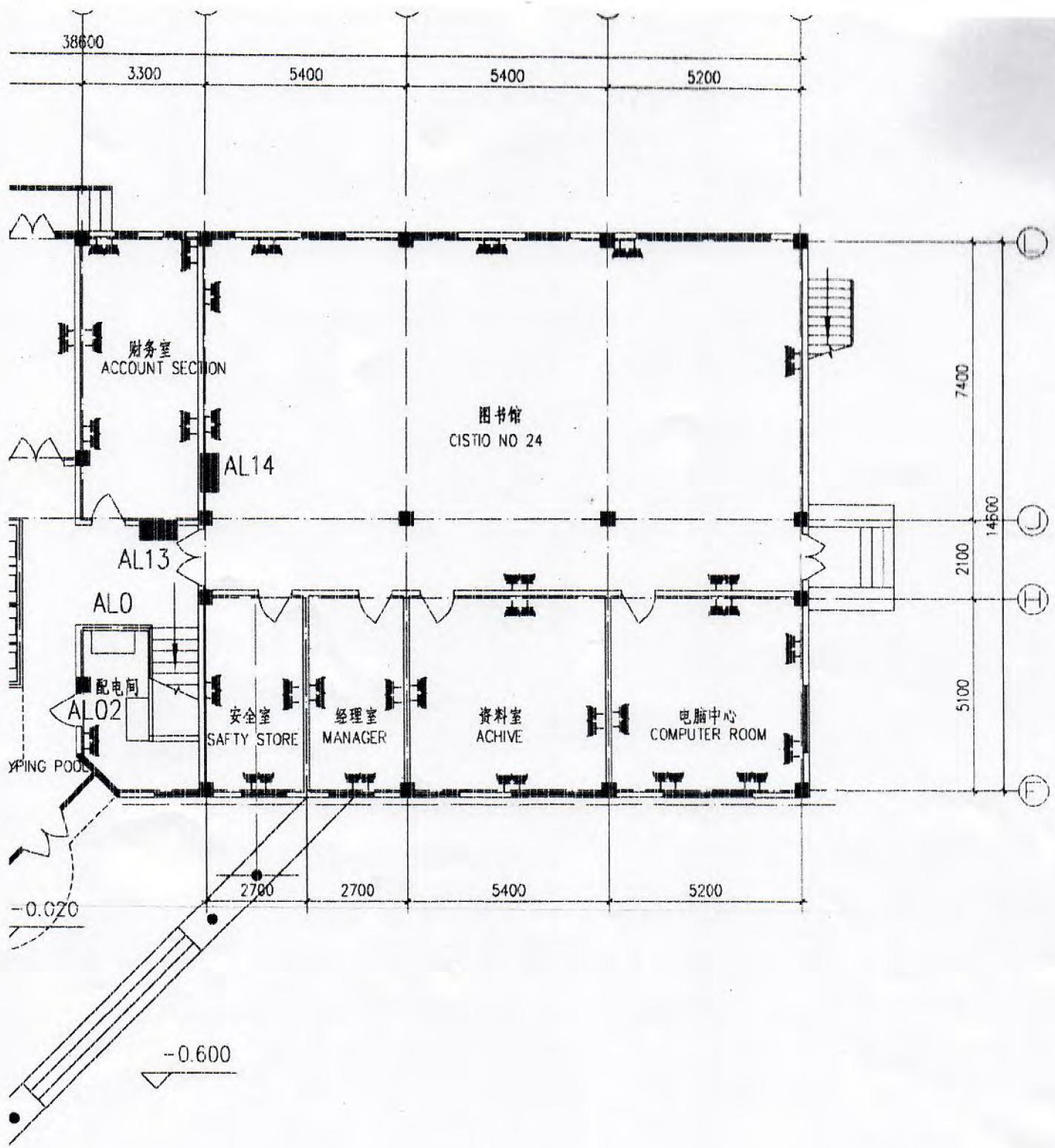
空调插座首层平面图 1:150

Air Conditioning Socket Arrangement Plan
for the Ground Floor.



插座首层平面图 1:150

socket Arrangement plan for the Ground Floor



插座首层平面图 1:150

Socket Arrangement plan for the Ground Floor

4.000

铝合金压型屋面板
aluminium roofing sheets

涂料墙面
coating wall

12厚钢化玻璃雨棚
12mm thick toughened glass

贴石材墙面
stone pasted wall

1200
1400
1000
1400
1000
600

①—② 立面图 1:150

①—② ELEVATION



中国友发国际工程设计咨询公司

CHINA FRIENDSHIP DEVELOPMENT INTERNATIONAL ENGINEERING DESIGN & CONSULTATION CORPORATION

审 定 张	工程名称	塞舌尔标准局办公楼	图 名	①—② 立面图 ELEVATION
校 核 张	PROJECT	The Bureau of Standard Office	SUBJECT	①—② 立面图 ELEVATION
专业负责 张	TITLE	Building Project Seychelles	工程号	200205
设计 张	UNIT		图 号	DRAWING PA07
制图 张			日期	2002.12

1: 50). (Local termite expelling method can also be used.)

门窗表
Door and Window Table

门窗名称	洞口尺寸	门窗数量	备注
LC1	1200x1400	37	
LC2	1000x1400	11	
LC3	600x1400	18	
LC4	2400x1400	4	
LC5	1800x1400	14	
LC6	1600x1400	1	
LC7	3000x1400	2	
LC8	3600x1400	2	
LC9	3925x1400	1	
LC10	1500x1400	9	
LC11	900x1400	2	
LC12	1200x1200	1	
LM1	1200x2400	5	
LM2	1400x2400	2	
LM3	1000x2400	1	
M1	900x2100	71	
M1	1000x2100	5	
M2	1500x2100	2	
M3	1000x2100	1	
M4	800x2100	2	
M5	1200x2100	2	
MLC1	7660X2400	1	
MLC2	3925X2400	1	
MLC3	7660X2400	1	
MLC4	1600X2400	1	